



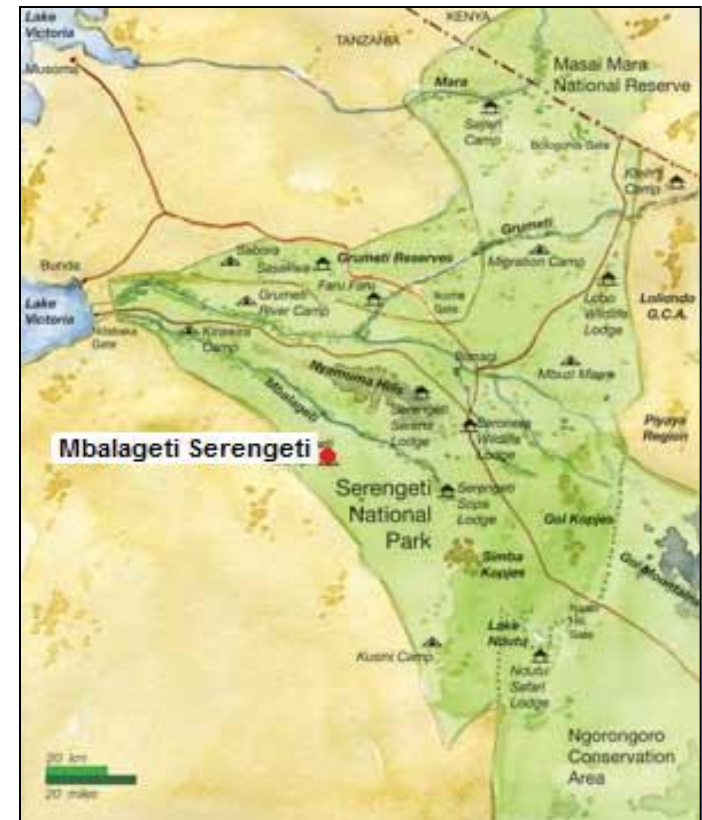
# “In your wildest dream”

## Location & Accessibility

Mbalageti Serengeti is located in the Western corridor of the Serengeti National Park in Tanzania. Serengeti covers 14,763 sq km and is contiguous with the Masai Mara Game Reserve in Kenya. Serengeti National Park is the largest and most famous national park in Tanzania. One of the main attractions is the annual migration of the wildebeests and its large number of lions, cheetahs and herds of giraffes and zebras.

With its unparalleled opportunities for wildlife viewing and seeing Africa at its most untamed, the Serengeti National Park offers a synchrony of beauty and nature as no other place.

The Mbalageti Serengeti is situated on the Mwamyeni hill and offers a breathtaking panoramic view of the Serengeti plains and the Mbalageti River. Entering from the Mwanza-Musoma highway, through the Ndabaka gate (1.5hrs) or from Naabi gate from Arusha side (3 hrs); the drive is a unique wilderness experience.



**Distances:**

Ndabaka Gate – 72 Km

Naabi Hill Gate – 140 Km

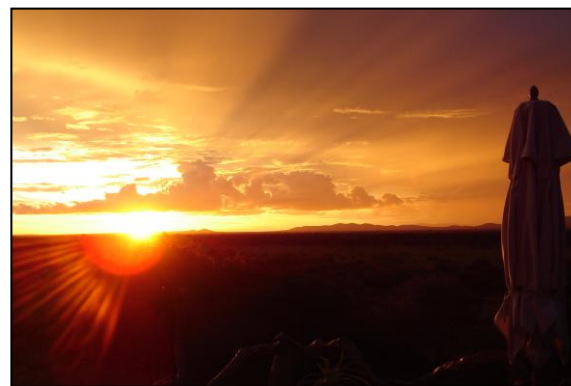
Seronera – 80 Km

Grumeti – 34 Km

The distance from the Seronera Corridor Road is 16km and the lodge is located near the Mbalageti River which has to be crossed. During the rainy season, April May, the Mbalageti River may be flooded and should not be crossed by car; therefore we accommodate a swing bridge. Your vehicle will be parked on the other side and the guests are escorted over the walking bridge and picked up by our vehicles.

**About us**

The Sandhu family owns Mbalageti Serengeti with their Head Office located in Mwanza. A Resident Manager, Shamez Nizar, is managing the lodge. With an extensive background in the hospitality industry, the management team is striving to offer a personalized and high standard service. Personnel consist of 80 Tanzanian staff members and 2 expatriates assisting in the operation of the Lodge.



## Accommodation

### Lodge Rooms

As an option for the budget traveler the lodge offers 14 rooms of standard type. All rooms are beautifully decorated in a modern design for a feeling of comfort and have en suite bathrooms and a small veranda. The Lodge Rooms are located approximately 500 meters from the main building. We provide 11 double and 3 twin bedded rooms, we do not provide triple lodge rooms.



### Tented Chalets

*For a lush safari experience...*

Sunset or sunrise, each side of the hill accommodates 12 of our 24 luxury tented chalets. With a structure of local rock and wood, these canvas fitted chalets are the perfect way of relaxing after a day of game viewing. All chalets have bathrooms with luxury amenities and are designed with attention to the smallest detail. Pamper yourself in the bath enjoying a spectacular view. The chalets are furnished and finished to make the stay as comfortable, special and memorable as possible. The private veranda with its cooling thatched roof is a tranquil oasis and works as an extension of your bedroom in the wild. Mbalageti offers 8 twin and 16 double bedded chalets.



### Honeymoon Chalets

*A true touch of romance...*

With all the same facilities as the other tented chalets our honeymoon chalets offer the additional luxury of an outdoor bathtub and a complimentary treat of Amarula liqueur during turn down.

\*Additional Honeymoon packages available.

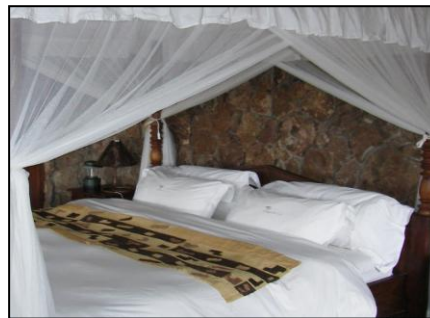
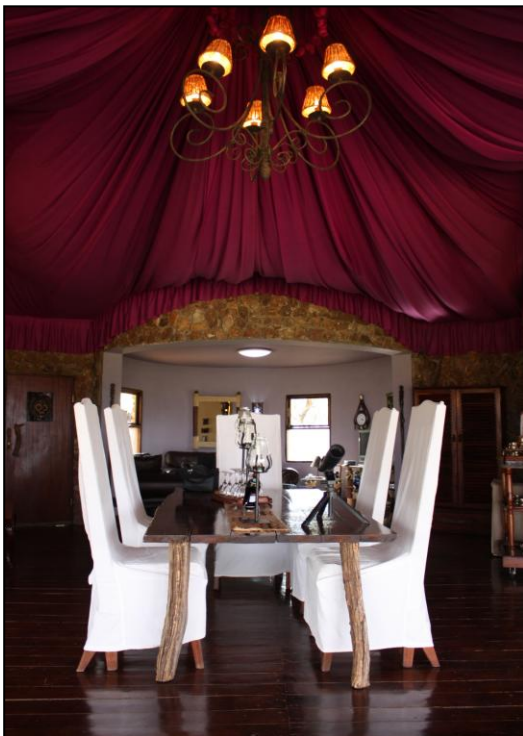


## Exclusive Suites (2)

*For a special occasion or just because you deserve it...*

With a little extra of everything and a private bath outdoor in the wild the suites offer the most exclusive way of safari living imaginable.

Nature and luxury in perfect harmony through design and comfort is the trademark of our Sunset and Sunrise Suites. Spacious, with two en suite bedrooms, a lounge veranda and all the luxury items you may wish for, the suites are the perfect accommodation for the more exclusive safari traveler.



**Others:** All Rooms have Fans & Safes.

## Facilities

### Restaurant

Breakfast, light lunch and dinner are served in the restaurant. Enjoy the finest cuisine with the Serengeti as a vista. Our dedicated Chef and his team are proud to serve you a fusion of local influences and Continental Cuisine. Most of our themed menus of the day are being prepared in a live setting.

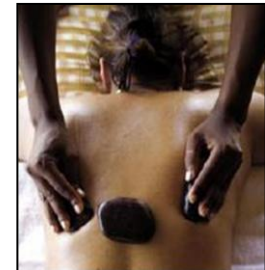


### Pool Deck

The swimming pool is made out of local rocks and is situated on the edge of the hill. With a 360 degree view of the Serengeti, the pool offers the ideal opportunity to cool off after a hot and dusty game drive. Complimentary lemonade and fruit kebabs are served by the pool side.

### Spa

Massages & plunge pool are available in a private and tranquil setting.



## Bar

The bar, situated in the centre of the main building is a natural meeting point and the heart of the lodge. It is a great place to share your day's experiences whilst sipping a drink of your choice. A wide variety of both local and imported products are available.

## Lounge Loft

Sit back and relax in our cozy corner on the second floor in the main building. Board games, puzzles, magazines and books are available to all our guests.

## Gift Shop

In our 'duka' you can buy a memory for life or a gift for your loved ones at home. Local products, arts and crafts as well as more luxurious items are available.



### **Welcome Center**

The welcome center is hosting the reception area and the board room which accommodates up to 24 conference delegates. Here we serve high tea every afternoon which can be enjoyed either indoors or in out in the tea garden. Early departures for balloon safaris etc. are facilitated in the welcome center with early tea and snacks. Wake up calls as well as room service orders for chalets are conducted from the welcome center Internet service is available in the board room from 7.00 am – 9.00 pm and is free of charge.

### **Security**

We have one armed Ranger from Tanapa stationed at Mbalageti Serengeti and a Security team on duty 24hrs a day. Our friendly Masaai escort the guests to and from their rooms.

### **Facilities for physically challenged guests**

All washroom facilities in the public areas are accessible to physically challenged guests. One Tented Chalet has been prepared with adjustments. Ask for Nr 14 for your elderly or physically challenged guests and we will make sure that they will have a comfortable stay with us!



**Extra activities and services**



*Bush Breakfast*



*Sundowner*



*Bush Dinner*



*Balloon Safari*



*Walking Safari*



*Safari Vehicle*

### **Payment**

Our guests may settle payment with cash or Visa/Master credit card (surcharge 5%).

### **Transfers and game drives**

We offer transfers to and from Grumeti airstrip (40min) as well as Game drives in the vicinity of the lodge. Our vehicle is 4 x 4 with space for 6 guests at a time.

### **Your drivers**

We accommodate the drivers/guides for tour companies in a separate wing of the staff village. Meals and accommodation is free of charge and they can purchase beverages in the bar which is located in the canteen area. We do not welcome drivers/guides in the guest areas unless they are accompanying their guests. Their meals and beverages will be charged to the guest's account.

### **Electricity**

Our electricity is provided by a generator which switches on at 5.30 am and off at 11.30 pm. Special requests of prolonged electricity service will be granted at an additional cost for the tour company.

### **MBALAGETI SERENGETI**

Western Corridor  
Serengeti National Park, Tanzania  
Email: [info@mbalageti.com](mailto:info@mbalageti.com)  
[www.mbalageti.com](http://www.mbalageti.com)

### **MBALAGETI SERENGETI**

Reservations office  
TFA Shopping Complex, Sokoine Road Arusha  
Tel.: +255 27 25 48 632, + 255 784 982 211  
Email: [mbalageti@bol.co.tz](mailto:mbalageti@bol.co.tz)